

Before HD in the BCTV Studio...Come Hear About the After

**Guest speaker:**  
**David Pakman,**  
host of The David Pakman Show,  
broadcast on BCTV since 2009

**bctv**

Brattleboro  
Community Television  
Annual Members Meeting 2012

## Brattleboro Community Television

Annual Report to Members  
Fiscal Year July 1, 2011 – June 30, 2012

## BCTV Board of Directors

<b>Board Members</b>	<b>Board Committees</b>
Lynn Barrett, President <i>At-large: 2013</i> Tim Wessel, Vice President <i>At-large: 2014</i> Joe Bushey, Treasurer <i>At-large: 2013</i> Dora Bouboulis, Secretary <i>At-large: 2014</i> Mary Cain <i>Appointee: Brattleboro 2012</i> Wendy Mason <i>At-large: 2013</i> Martin Langeveld <i>At-large: 2012</i> Steve West <i>At-large: 2013</i>	<i>Executive :</i> Lynn Barrett, Tim Wessel, Joe Bushey, Dora Bouboulis
	<i>Finance:</i> Joe Bushey (chair), Martin Langeveld
	<i>Equipment:</i> Tim Wessel (chair), Joe Bushey
	<i>Personnel:</i> Lynn Barrett (chair), Martin Langeveld, Wendy Mason
	<i>Nominating:</i> Dora Bouboulis (chair), Lynn Barrett, Martin Langeveld.
	<i>Membership &amp; Fundraising:</i> Lynn Barrett (chair), Dora Bouboulis, Mary Cain
	<i>Policies &amp; Bylaws:</i> Steve West (chair), Joe Bushey, Mary Cain
	<i>Website:</i> Lynn Barrett (chair), Wendy Mason, Tim Wessel
<b>Brattleboro Community Television, Inc.</b> <b>203 Main Street, Suite 201</b> <b>Brattleboro, VT 05301</b> <b>802-257-0888</b> <b>BrattleboroTV.org</b>	

## BCTV Staff

Cor Trowbridge  
*Executive Director*

Vlasta Popelka  
*Operations Manager*

Roland Boyden  
*Production Manager*

Frederic Noyes  
*Access Coordinator*

Rich Melanson  
*Field Producer*



Above: 2012 video campers and staff relax on the set while filming "The Time Traveling Trio." Last summer's camp video "Double Trouble" won a national award for Original Teleplay from the Alliance for Community Media.



## Report of the Board President Lynn Barrett

For the last five years, I have had the privilege of serving as president of the board of BCTV. We continue on the road to upgrades in technology and equipment, and improved community outreach.

- We launched our new website last year and continue to make improvements for easy sharing. The website offers live streaming of channels 8 and 10, as well as video on demand. Local viewers witnessed the value of these services during the throes and aftermath of Tropical Storm Irene. BCTV served as a vital source of live reports and online video, as well as working with the town to communicate emergency and key safety information.
- We are now officially representing the citizens and towns of Brattleboro Guilford, Vernon, Putney, Dummerston, Newfane, Townshend and Jamaica, Vermont.

As we look ahead to the coming year, my efforts will continue to be focused on increasing the awareness and image of BCTV, along with board development, and fundraising. As a board, we will continue to oversee upgrades in equipment, and user-friendly technology, including enhanced training opportunities, and new local programming—especially to engage youth and seniors.

As we move to fulfill our goal of becoming a true community media center, we will also be designing and building a new studio set.

I encourage everyone in our community -- individuals, non-profits, local businesses, farmers, artists, entrepreneurs, writers etc., to take advantage of the tools and training that BCTV offers, so that you can produce your own stories and share them with your neighbors and the world at large. We are also now offering a new membership program with special programming and training benefits.

Let me also take this opportunity to thank all of our volunteers, sponsors, producers, members, fellow board members and especially the staff and our executive director, Cor Trowbridge.

Very cordially,

Lynn Barrett  
President of the Board, BCTV  
President, Primetime Concepts, Inc.  
Publisher, *SO Vermont Arts & Living*  
[www.vermontartsliving.com](http://www.vermontartsliving.com)

*BCTV board and staff accepted a Special Recognition Award from the Brattleboro Area Chamber of Commerce for 35 years of service to the community.*

*Left to right: Mary Cain, Frederic Noyes, Lynn Barrett, Cor Trowbridge, Joe Bushey, Tim Wessel, Martin Langeveld.*



## Message from the Executive Director Cor Trowbridge

BCTV tackled two major initiatives this year: upgrading the studio to HD, and adding six new municipal select board meetings to our channel lineup. While one was a technological leap and the other an expansion of service, they both increased the value of BCTV as a community resource.



**Renovated Studio:** BCTV's studio is located on the third floor of the Municipal Center, in a space which was the chemistry lab when the building was Brattleboro High School before becoming our studio in 1986. Staff and volunteers began last winter by emptying the space, ripping out cables and conduits, patching and painting the walls, and gutting the control room. This spring, Roland Boyden and Frederic Noyes strung new cables throughout the building, which was labor-intensive but critical to improving picture quality. Once the cables were run, engineers installed new fixtures and equipment, including an HD switcher with multiple monitors and three HD cameras. The result is a studio capable of sending a fully HD signal throughout the production chain. The picture, sound quality, and graphics are in line with today's broadcast standards, even though our channels are ultimately delivered by Comcast in Standard Definition. The final task of the studio project is to select set furniture, backdrops and light elements – and then let our producers take over!



**More municipal meetings:** In the past, BCTV's coverage of selectboard meetings was limited to Brattleboro, which was staff-produced, and Vernon, which has a remote connection. With the addition of five new towns through a

contract with Southern VT Cable last June, the timing was right to start providing equal coverage for all eight selectboards in BCTV's service territory. We hired a Field Producer, Rich Melanson, who has worked with each Town to get the best video and audio possible in a variety of meeting room conditions. Though met with some initial reluctance, positive feedback from residents helped board members see the benefits of having their meetings on Channel 10 and available on-demand. Selectboard meetings have introduced BCTV to residents in Southern VT Cable towns and we will build on this base with trainings and outreach in the year to come. – Cor Trowbridge

**Above:**  
Stages of studio  
demolition.

**Right:**  
New graphics  
capabilities  
created by the  
Broadcast Pix  
switcher.



## Financial Statement

BCTV provides public access services to 5,000 Comcast subscriber households in Brattleboro, Guilford and Vernon; and to 2,000 Southern VT Cable subscribers in Putney, Dummerston, Jamaica, Townshend, and Newfane. This year, BCTV added a part-time Field Producer and changed all casual labor to part-time employees.



### BCTV Statement of Activities 7/1/11 – 6/30/12

	FY 2012	FY 2011	\$ change	% change
<b><u>Revenue</u></b>				
Franchise fees - Comcast - Operating	214,776	208,004	6,772	3.3
Franchise fees - Comcast - Capital	21,027	14,936	6,091	40.8
Franchise fees - Southern VT Cable	13,873	5,739	8,134	141.7
Contributions and grants	3,668	8,220	-4,552	-55.4
Investment income	756	961	-205	-21.3
Other income	7,571	9,377	-1,806	-19.3
Total revenue	261,671	247,237	14,434	5.8
<b><u>Expenses</u></b>				
Salaries and wages	147,455	125,097	22,358	17.9
Payroll taxes	11,952	10,134	1,818	17.9
Employee benefits	13,998	12,346	1,652	13.4
Professional fees	3,705	8,426	-4,721	-56.0
Rent	4,800	4,800	0	0.0
Equipment Rental	803	1,116	-313	-28.0
Insurance	3,349	4,143	-794	-19.2
Office expenses	2,283	3,031	-748	-24.7
Repairs and maintenance	6,936	5,352	1,584	29.6
Contract and casual labor	383	5,343	-4,960	-92.8
Telephone & Bandwidth	5,171	4,762	409	8.6
Hospitality	2,246	2,093	153	7.3
Printing and promotion	1,625	1,602	23	1.4
Postage & shipping	561	819	-258	-31.5
Dues and subscriptions	2,344	2,546	-202	-7.9
Studio supplies	1,109	1,784	-675	-37.8
Travel	659	1,049	-390	-37.2
Conferences	2,580	1,120	1,460	130.4
Other/Misc.	258	110	148	134.5
Total expenses	212,217	195,673	16,544	8.5
Change in net assets	49,454	51,564		
Depreciation	17,260	16,763		
Net change after depreciation	32,194	34,801		

## Donors

### **BCTV Underwriters:**

Support for all of BCTV's local programming programming for the year.

#### **- Local Programming:**

The Brattleboro Savings & Loan Association,  
c/o The Vermont Community Foundation

#### **- Local Government Programming:**

Brattleboro Food Coop

#### **- Studio Programming:**

The Brattleboro Retreat

### **Production Sponsors:**

Support for live broadcast of town-wide events.

Brattleboro Area Chamber of Commerce  
Brattleboro Food Coop  
Brattleboro Memorial Hospital  
The Brattleboro Savings and Loan Association  
Brown & Roberts Ace Hardware  
Dick's Lock Repair  
Robert S. Fagelson, MD  
GPI Construction, Inc.  
Hillwinds Farm Storage LLC  
Potter Stewart Jr. Law Offices, PC  
The Richards Group  
Sam's Outdoor Outfitters

### **Individual Program Sponsors:**

These donors helped producers create local programming by covering production costs.

#### **-Artists *ala Mode*:**

Southern VT Arts & Living  
Nomad Industries

#### **-The Pulse of Brattleboro**

Vermont Artisan Design  
Marina Restaurant  
Champs Diner

### **Organizational Donors:**

These organizations made contributions to support BCTV programming.

- First United Methodist Church
- Southern VT League of Women Voters
- Center for Health & Living

### **Live Streaming Sponsors:**

Support for live streaming of individual events, as well as 24/7 streaming of Channels 8 & 10 and the on-demand video archive on [brattleboroTV.org](http://brattleboroTV.org).

- *brattleboroTV.org: live & on-demand video*  
The Brattleboro Savings & Loan Association,  
c/o The Vermont Community Foundation

- *Representative Town Meeting 2012:*  
Brattleboro Food Coop

### **Community Bulletin Board:**

Support for nonprofit announcements on the Community Bulletin Board.

- Brattleboro Area Chamber of Commerce
- Brattleboro Farmer's Market



### **Free Speech TV**

Daily programming from the nonprofit satellite channel FSTV such as Democracy Now, Gay USA, Al Jazeera English, and Thom Hartmann was made possible by an anonymous donation.

### **Donations of \$20 or more:**

Hugh Bronson  
Pam Lierle  
Jim Maxwell  
Judy Myrick  
Nancy Stefanik  
Marcus Van

### **In-kind Donations:**

Champs Diner: *volunteer hospitality*  
Sam's Outdoor Outfitters: *popcorn for camp*  
Top of the Hill Grill: *volunteer hospitality*

## Members

BCTV had 180 members in FY12, a 16% increase from last year's membership. Any resident of Windham County may become a member of BCTV. There is no fee for membership, though a \$5.00 donation is suggested and often exceeded. Members are eligible to vote at any meeting of the membership, run for election to the BCTV board of directors, attend video production trainings to become certified to use BCTV equipment and facilities, and sponsor programming. Individuals under 18 may become members if their parents assume responsibility.



*Above: BCTV volunteer Maria Dominguez in the middle of the action. Photo: Brattleboro Reformer*

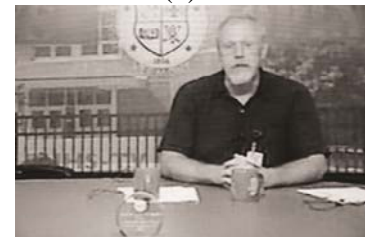
## Producers & Editors

BCTV's 60 active producers who submitted local programming to BCTV in 2011-12 increased by 25% from the previous year. They are listed below, followed by the number of programs they worked on or submitted. (\*BCTV staff or paid field producer)

Wyatt Andrews (5)  
Michael Billingsley (1)  
Gary Blomgren (7 + BUHS-TV)  
Michael Bosworth (2)  
Roland Boyden\* (102 5:45)  
Joe Bushey (35)  
Belle Coles (2)  
Compass School (1)  
Lynn Corum (43)  
Michael Courtemanche (20)  
Mark Crowther (1)  
Richard Davis (3)  
Dan Dewalt (1)  
Maria Dominguez (35)  
Andrika Donovan (6)  
S. Dybas/In-Sight Photo (1)  
Merry Elder (8)  
Tom Finnell (1)  
Bill Forchion (2)  
Doug Frank (3)  
Michael & Bryan Gantt (53)  
Wendy Germain (2)  
Clark Glennon (2)

Chris Grotke (5)  
Janice Hall (2)  
Michael Hatt (3)  
Bill Holiday (3)  
Ian Kiehle\* (30)  
Catrina Lawley (9)  
Deborah Lazar\* (16)  
Theresa Maggio\* (54)  
Greg McAllister (21)  
Cheryl Meachen (1)  
Rich Melanson \*(46)  
Robin Chaia Mide\* (2)  
Jo Miller-Gamble\* (2)  
Frank Molina (2)  
Mike Mrowicki (3)  
Alfred New (3 + St. Michael's)  
Frederic Noyes\* (17)  
Desha Peacock (4)  
Carolyn Peck (5)  
Emily Peyton (8)  
Daryl Pillsbury (19)  
Em Richards (1)  
Austin Rice (3)

Eliot Samuel-Lamm (1)  
Bailey Robinson (6)  
Ray Sebold (2)  
Grady Smith\* (2)  
Luke Stafford (2)  
Nancy Stefanik (1)  
Juliette Sutherland (3)  
Kip Tewksbury (9)  
Cor Trowbridge\* (3)  
Kathryn Turnas II\* (67)  
Clay Turnbull (1)  
Kathy Urffer (1)  
Marcus Van (1)  
Francine Vallario & St.  
Michael's crew (50)  
Tim Wessel (1)



## Volunteers

The volunteers listed below contribute to BCTV by serving on the board or a committee, being a crew member during BCTV-produced events, moderating roundtable discussions or providing commentary for live events. BCTV relies heavily on this active group of skilled volunteers throughout the year. The list also includes interns who choose to spend their apprenticeship or community service hours with BCTV.

Wyatt Andrews  
Lynn Barrett  
Dora Bouboulis  
Joe Bushey  
Mary Cain  
Yada Claassen  
Vidda Crochetta  
Robert Cullinane  
Maria Dominguez  
Nolan Edgar  
Jackson Emmer  
Chris Estes  
Larry Farkas  
Thomas Finnell  
Wendy Germain  
Clark Glennon

Christopher Grotke  
Janis Hall  
Zeb Hathaway  
Tim Johnson  
Ian Kiehle  
Jan Kovarik  
Vera Kromsianovia  
Theresa Maggio  
Wendy Mason  
Jeff Mastroianni  
Jim Maxwell  
Greg McAllister  
Rich Melanson  
Robin Chaia Mide  
Jo Miller-Gamble  
Mike Mrowicki

Alfred New  
BethAnn Ortiz  
Meghan Piercy  
Daryl Pillsbury  
Karen Reardon  
Em Richards  
Harry Silbaugh  
Hugh Silbaugh  
Kip Tewksbury  
Kathryn Turnas  
Kathy Urffer  
Francine Vallario  
Tim Wessel  
Steve West



### Volunteer Hours:

BCTV tracks volunteer hours to measure the organization's overall contribution to the community. Producers who volunteer their time to create local programming are included in the chart below.

Type of Volunteering	# Volunteer Hours
Crewing for BCTV productions	304
Board of Directors & Committee meetings	288
Producing: Field Work & Studio	2193
Producing: Editing	2809
<b>Total Hours</b>	<b>5,594</b>



## Training

**Video Production Training** - BCTV offers a training series in the Fall, Winter and Spring. Individual certification, which is a quick orientation to camera controls, has increased in popularity. This type of streamlined training at the level of the individual is an efficient method for getting producers out in the field quickly, but BCTV will continue to offer a more in-depth option for those who want a greater foundation of knowledge.

- **Basic Video Production:** How to operate a video camera, basic composition and lighting techniques, the importance of good audio.
- **Editing with Final Cut:** Explains the basics of Final Cut Pro, including capturing footage, cutting, adding transitions, special effects, titles and audio tracks.
- **Advanced Editing with Final Cut:** Explores more advanced editing features.
- **Intro to Studio Production:** Introduces the technical and conceptual skills to produce or crew on a program in BCTV's studio and control room. Offered by request.
- **"Flash" Individual Trainings:** BCTV accommodates requests for on-site trainings for nonprofit groups and individuals to learn the skills necessary to shoot under specific conditions.
- **Workshops:** Single-session workshops include Video Uploading and DVD Authoring.



Fiscal Year	Trainings Held	Individual Certification	Total Trainees	# Certified
10-11	9	21	40	35
11-12	6	26	53	52

**Summer Youth Video Camp** –The 2012 week-long session had 11 campers, age 9-12, who created a '80s-themed video called "The Time Traveling Trio." This popular program has kids filming all over downtown Brattleboro and they end the week by releasing their premiere live on Channel 8.



*Campers go on a wild ride in front of the new green screen.*



*L to R: Adam on script, Roland on camera, Carl on boom mic.*

## Equipment Use

Equipment use this year reflects volunteers becoming comfortable with card capture cameras and moving away from tape. The small Vixia kits flew out the door once producers realized their convenience and image quality. We'll be adding another Vixia-sized camera with dual audio inputs in response to demand for this functionality from our busy producers. The remainder of the FY13 capital budget will be focused on purchasing set furniture for the renovated studio.

Camera Kit Checkouts	2011-12	2010-11	% change	Notes
Sony 900-1	40	47	-14.9	Retired 7/1/12
Sony 950	23	28	-17.9	Retired 7/1/12
Sony PD170-1, 2 & 4	371	244	52.0	Only for live shoots; no capture
Field kit #3: Sony PD170-3	59	97	-39.2	Tape capture only
Field kits #5 & #6: Sony Z5U	316	239	32.2	Tape & card capture
Field kits #1 & #2: Canon Vixia	206	62	232.3	Card capture only
Canon XA10 (staff)	26	new		Assigned to Field Producer
Canon XF105 (3)	126	new		HD Studio cameras
<b>Total</b>	<b>1167</b>	<b>717</b>	<b>62.8</b>	



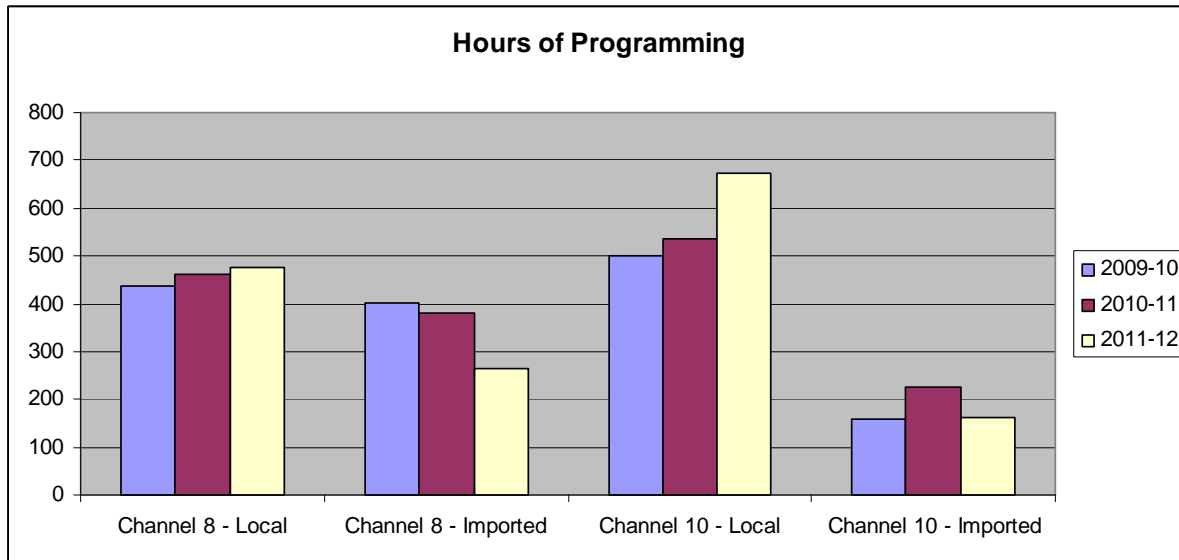
*Left: Staff set up the new switcher for Selectboard meeting.*

*Right: Debbie Lazar checks out a camera kit for Putney Town Meeting.*

Facilities Use - Hours	11-12	10-11	Change %
Editing Station 2: Producers	1208	1119	8.0
Editing Station 3: Producers	1384	872	58.7
Editing Station 4: Interns	217	124	75.0
BCTV Studio	680	290	134.5
<b>Total</b>	<b>3489</b>	<b>2405</b>	<b>45.1</b>

## Programming

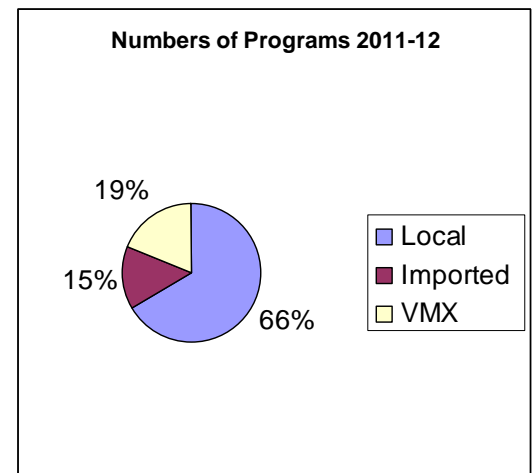
Total hours of first-run local programming on BCTV increased 15% this year to 1,148. While Channel 8 increased a modest amount, Channel 10 grew by 25% from the addition of six new select board meetings. Imported programming decreased as staff put more time toward the facilitation of local content. Programming from Free Speech TV, a nonprofit satellite channel, and is excluded from these figures.



Hours of "First Run" Programming	2011-12 Hours: Mins: Secs	Change from 10-11
Channel 8 – Local	475:34:12	3.3
Channel 8 – Imported (excludes FSTV)	264:38:17	-30.4
Channel 10 – Local	672:17:23	25.1
Channel 10 – Imported (excludes FSTV)	161:10:48	-28.1
<b>TOTAL</b>	<b>1573:40:40</b>	<b>-1.8</b>

**Type of Programming:** The number and percentage of local programs increased on both channels, while imported and programs downloaded from VT Media Exchange (VMX) declined. Channel 10 increased dramatically with additional meetings and education programming after Southern VT Cable subscribers started receive it in June 2011.

Number of Programs	2010-11	2011-12	% change
Channel 8 - Local	652	696	7
Channel 8 - Imported	399	220	-45
Channel 8 - VMX	200	207	4
Channel 10 - Local	376	524	39
Channel 10 - Imported	80	56	-30
Channel 10 - VMX	166	132	-20
<b>Total</b>	<b>1873</b>	<b>1835</b>	<b>-2</b>



## Local & Imported Series

**Locally-produced series:** Series programs are produced and submitted regularly throughout the year. Local series are given priority in scheduling over imported series.

**5:45 Live**, BCTV/Roland Boyden  
**Agape Christian Fellowship**, Michael & Bryan Gantt  
**All Souls Church Unitarian Universalist**,  
 Kathryn Turnas II  
**Artists à la Mode**, Kathryn Turnas II  
**BCTV Open Studio**, BCTV  
**Brattleboro Citizens' Breakfast**, Kathryn Turnas II  
**Brattleboro Development Review Board Meeting**,  
 BCTV/Theresa Maggio  
**Brattleboro Housing Authority Board**, Merry Elder  
**Brattleboro Planning Commission Meeting**,  
 BCTV/Kathryn Turnas II  
**Brattleboro Selectboard Meeting**, BCTV  
**BUHS School Board Meeting**, BCTV/Ian Kiehle  
**BUHS-TV Morning Advisory Report**, Gary Blomgren  
**BUHS Varsity Basketball**, Gary Blomgren  
**The Desha Show**, Desha Peacock  
**Dummerston Conservation Commission Presents**,  
 BCTV/Theresa Maggio  
**Dummerston Selectboard Meeting**, BCTV/Rich  
 Melanson  
**First Congregational Church**, Lynn Corum  
**First Wednesdays Presents**, Maria Dominguez  
**Guilford Selectboard Meeting**, BCTV/Ian Kiehle

**Independent Lens**, BCTV/Ian Kiehle  
**Jamaica Selectboard Meeting**, BCTV/Rich Melanson  
**Leland & Gray School Board Meeting**, BCTV/Rich  
 Melanson  
**Library Lectures/ Author Talks**, Maria Dominguez  
**Living & Dying**, Greg McAllister  
**Marijuana Resolve**, Joe Bushey, Vidda Crochetta,  
 Daryl Pillsbury  
**Montpelier Connection**, BCTV/ Rep. Mike Mrowicki  
**Naked Brattleboro**, Frederic Noyes & Tim Wessel  
**Neighbor to Neighbor**, Lynn Corum  
**Newfane Selectboard Meeting**, BCTV/Rich Melanson  
**The Pulse of Brattleboro**, Daryl Pillsbury/Joe Bushey  
**Putney Selectboard Meeting**, BCTV/Rich Melanson &  
 Debbie Lazar  
**St. Michael's Catholic Mass**, Francine Vallario &  
 Alfred New  
**Things You Can't Talk About**, Chris Grotke &  
 Lise Lepage  
**Townshend Selectboard Meeting**, BCTV/Rich  
 Melanson  
**Transition Putney**, BCTV/Debbie Lazar  
**Vernon Selectboard Meeting**, Catrina Lawley  
**Windham World Affairs Council**, Maria Dominguez

**Imported series:** These are programs produced regularly outside of BCTV's service territory and sponsored by a local resident. The local sponsor is listed following the name of the series.

**Al Jazeera News**, Shoshana Rihn  
**Army Newswatch**, Steven Martin  
**Athens Community Christian Church**, Carol Nilges  
**Bernie Sanders Reports**  
**Community Medical School**, Harald Holm  
**Dartmouth-Hitchcock Lectures**, Harald Holm  
**Democracy Now!** Christian Avard  
**The David Pakman Show**, Robin Reiske  
**Eckankar: Ancient Wisdom for Today**, D. Brookes  
**For the Animals**, Cathy Barrows  
**Free Speech TV**, Chris Grotke & Lise LePage  
**Gay USA**, Tim Wessel

**Gov. Shumlin Press Conference**  
**Grilldog Presents**, Yada Claassen  
**Health Matters**, Suzanne Groenewold  
**Peak Moments**, Tim Stevenson  
**Rep. Peter Welch Press Conference**  
**Statehouse Conversations**, FACT-TV  
**The Rhema Word**, David Putnam  
**The Road to Recovery**, Robin Rieske  
**Time in God's Word**, Carol Nilges  
**Under the Golden Dome**, ORCA (Montpelier)  
**VT State Board of Education meetings**  
**Words of Peace**, Karen Reardon

**Open Studio:** The purpose of BCTV's Open Studio is to give nonprofit organizations the opportunity to promote events and campaigns, as well as raise awareness about the organization and its mission.

<b>BCTV "Open Studio" 2011-12</b>	
Brattleboro Area Drop In Center: Project Feed the 1000s	Community College of VT: Career Readiness Certificate
Brattleboro Area Hospice: Wild Night on the Catwalk	Meeting Waters YMCA: Strengthening Our Community
Brattleboro Memorial Hospital: President Steven Gordon	Morningside Shelter: 1 <sup>st</sup> Annual Hike for the Homeless
Brattleboro Memorial Hospital: Colon Cancer Awareness	Strolling of the Heifers: the 11 <sup>th</sup> Annual Parade
Brattleboro Memorial Hospital: Cardiologist Mark Burke	VT Adult Learning: What Can It Do For Me?
Brattleboro Retreat: Youth Suicide Prevention	Women's Film Festival 2012
Brattleboro Senior Meals	World Learning: Adam Weinberg, President & CEO

## Community Bulletin Board

BCTV's electronic bulletin board was utilized by over 150 community organizations to post local nonprofit events, both static images and short videos. BCTV uses the bulletin board to acknowledge underwriters and to announce upcoming BCTV trainings and events. There were 658 postings from the following organizations:

AARP  
Actors Theatre Playhouse  
Agape Christian Fellowship  
AIDS Project of Southern Vermont  
Alcoholics Anonymous & Al-Anon  
All Soul's UU Church  
American Assoc. of Univ. Women  
American Legion Post #5  
Arts Council of Windham County  
Athens Brick Meeting House  
Bellows Falls Opera House  
Blue Cross / Blue Shield  
Bonnyvale Env. Education Center  
Brattleboro Area Bike Action  
Brattleboro Area Chamber of Commerce  
Brattleboro Area Drop In Center  
Brattleboro Area Hospice  
Brattleboro Area Jewish Community  
Brattleboro Area Prevention Coalition  
Brattleboro Area Skatepark is Coming  
Brattleboro Arts Initiative  
Brattleboro Boys & Girls Club  
Brattleboro Climate Protection  
Brattleboro Eagles Lodge  
Brattleboro Farmers' Market  
Brattleboro Firefighters Assoc.  
Brattleboro Food Coop  
Brattleboro Goes Fourth  
Brattleboro Historical Society  
Brattleboro Hockey Association  
Brattleboro Housing Authority  
Brattleboro Literary Festival  
Brattleboro Masonic Center  
Brattleboro Memorial Hospital  
Brattleboro Museum & Art Center  
Brattleboro Music Center  
Brattleboro Recreation & Parks Dept  
Brattleboro Rotary Club  
Brattleboro Senior Center  
Brattleboro Time Trade  
Brattleboro Union High School  
Brattleboro West Arts  
Brattleboro Women's Chorus  
BrattStock  
Brooks Memorial Library  
Building a Better Brattleboro  
Centre Congregational Church  
Cherry Street Artisans  
Chesterfield Bridge Pres. Society  
Community College of VT  
Compass School  
Dummerston Congregational Church  
Dummerston Conservation Comm.  
Dummerston Perennial Swappers  
Dummerston PTFO  
e-Vermont  
Efficiency Vermont

Estey Organ Museum  
Entergy Vermont Yankee  
Evening Star Grange (Dummerston)  
Falls Area Community TV  
FEMA  
Find Marble  
First Baptist Church  
First Congregational Church  
First United Methodist Church  
First UU Church, Chesterfield  
Girl Scouts  
Green Mtn Music Festival  
Guilford 250<sup>th</sup> Anniversary  
Guilford Farmers Market  
Guilford Fire Dept.  
Guilford Historical Society  
Historical Society of Windham Cty  
Hooker Dunham Theatre & Gallery  
Hunger Council of Windham Cty  
In-Sight Photography  
Landmark College  
Latchis Theatre  
League of Women Voters  
Leland & Gray Middle & High School  
Mahalo Arts Center  
Marlboro College & Graduate Center  
Moore Free Library (Newfane)  
Morningside Shelter  
Music New England  
New England Center for Circus Arts  
NE Coalition on Nuclear Pollution  
New England Youth Theatre  
Newfane Heritage Festival  
Next Stage Arts  
NOFA-VT  
Occupy Wall Street  
Overeaters Anonymous  
PAX  
Post Oil Solutions  
Putney Cares  
Putney Community Center  
Putney Craft Tour  
Putney Food Coop  
Putney Historical Society  
Putney Public Library  
Putney Recreation League  
The Putney School  
Rescue Inc.  
Robert H. Gibson River Garden  
Rural Vermont  
Safe & Green Campaign  
Sandglass Theater  
Senior Solutions  
SE VT Watershed Alliance  
Slow Living Summit  
Southern VT Scrabble Club  
State of Vermont  
St. Michael's Roman Catholic Church & School  
Stockwell Drive Community Garden

Strolling of the Heifers  
Town of Brattleboro  
Town of Putney  
Townshend Farmer's Market  
Transition Dummerston  
Transition Putney  
Turning Point Recovery Center  
Twilight on the Tavern Lawn  
Twin States Network  
Union Institute  
United Way Windham County  
UVM Master Gardener  
Vermont Academy  
VT Adult Learning  
VT Agricultural Business Ed. Center  
VT Bike Ped  
VT Center for Independent Living  
VT Center for Photography  
VT Freedom to Marry  
VT Humanities Council  
VT Jazz Center  
VT Performance Lab  
VT Red Cross  
VT Snow Sports  
VT Theatre Company  
VT Workers' Center  
West Brattleboro Baptist Church  
West Dummerston Vol. Fire Dept.  
Whetstone Studio for the Arts  
Windham County Heat Fund  
Windham County Historical Society  
Windham & Windsor Housing Trust  
Windham Regional Career Center  
Windham Regional Commission  
Windham SE Supervisory Union  
Windham Solid Waste Man. Dist.  
Windham World Affairs Council  
Winter Farmers' Market  
Women's Film Festival  
WVEW-FM  
Youth Services Inc.



